



CONFIDENT BEGINNER | 1 DAY CLASS

THE ROAD LESS TRAVELED

Finished Quilt: 59" x 73"

Quilt design by Carolyn Beam, featuring Sparkle+Fade and Indah Batiks.

This mash up of Sparkle+Fade and Indah Batiks highlights the various fabric finishes only available from Hoffman Fabrics.



Q4467 3M-White Metallic

Q4468 4M-Black Metallic

Q4469 4M-Black Metallic

Q4470 4M-Black Metallic

Q4471 4M-Black Metallic

103 499-Chartreuse

128 182-Ginger

149 61G-Turquoise Gold

170 507-Reef

FREE PATTERN DOWNLOAD

HoffmanFabrics.com

FABRICS	1 KIT
Q4467 3M-White Metallic	3 Yards
Q4468 4M-Black Metallic	3/4 Yard
Q4469 4M-Black Metallic	3/4 Yard
Q4470 4M-Black Metallic	1 3/8 Yard
Q4471 4M-Black Metallic	1 1/2 Yards*
103 499-Chartreuse	3/8 Yard
128 182-Ginger	5/8 Yard
149 61G-Turquoise Gold	1/4 Yard
170 507-Reef	1/2 Yard

* includes binding

The Road Less Traveled

Fabric Requirements:

Q4470 4M Black: 1 3/8 yards for blocks

Q4469 4M Black: 3/4 yard for blocks

170-507 Reef: 1/2 yard for blocks

Q4467 3M: 3 yards for blocks

128-182 Ginger: 5/8 yard for blocks and border #1

103 499 Chartreuse: 3/8 yard for blocks

149-61G Turquoise/Gold: 1/4 yard for blocks

Q4468 4M: 3/4 yard for sashes

Q4471 4M: 1 1/2 yards for border #2 and binding

Cutting:

Q4470 4M Black:

Cut four 11" x WOF strips

Subcut fifty 3" x 11" rectangles for foundation piecing

Q4469 4M Black:

Cut two 11" x WOF strips

Subcut twenty-five 3" x 11" rectangles for foundation piecing

170-507 Reef:

Cut four 3" x WOF strips

Subcut eighteen 3" x 7" rectangles for foundation piecing

Q4467 3M:

Cut thirty-nine 2" x WOF strips

Subcut 500 2" x 3" rectangles for foundation piecing

Cut eight 3" x WOF strips

Subcut 100 3" x 3" squares for foundation piecing

128-182 Ginger:

Cut seven 1 1/2" x WOF strips for border #1

Cut three 3" x WOF strips

Subcut twelve 3" x 7" rectangles for foundation piecing

103 499 Chartreuse:

Cut three 3" x WOF strips

Cut twelve 3" x 7" rectangles for foundation piecing

149-61G Turquoise/Gold:

Cut two 3" x WOF strips

Sub-cut eight 3" x 7" rectangles for foundation piecing

Q4468 4M:

Cut six 3 ½" x WOF strips making sure to center the giraffes in each strip

Q4471 4M:

Cut seven 4" x WOF strips for border #2

Cut eight 2 ½" x WOF strips for binding

Making the Blocks:

This quilt has twenty-five foundation-pieced blocks. Each block has five sections. All of the blocks use Q4467 3M for the background, Q4470 4M for the two long outside sections (section 1) and Q4469 4M for the long middle section (section 3). Nine blocks use 170-507 Reef for the two shorter, middle sections (section 2), six blocks use 128-182 Ginger for the section 2's, six blocks use 103-499 Chartreuse for the section 2's and four blocks use 149-61G Turquoise/Gold for the section 2's.

1. Make seventy-five paper copies total of sections 1 and 3 and fifty paper copies of section 2.

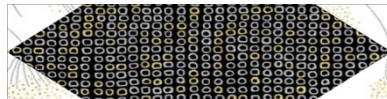


Sections 1 and 3
Make 75 copies



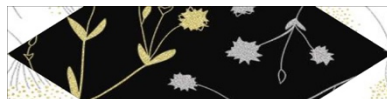
Section 2
Make 50 copies

2. Using Q4470 4M for patch 1 and Q4467 3M for patches 2–5, foundation piece section 1 in numerical order. Press and trim each patch after sewing. Repeat to make 50 section 1's.



Make 50

3. Using Q4469 4M for patch 1 and Q4467 3M for patches 2–5, foundation piece section 3 in numerical order. Press and trim each patch after sewing. Repeat to make 25 section 3's.



Make 25

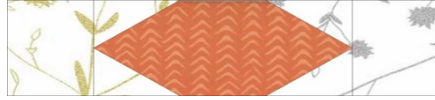
4. Make the appropriate number of section 2's as shown below using the color indicated for patch 1 and Q4467 3M for patches 2–7.



Section 2 with 170-507 Reef
Make 18



Section 2 with 103-499 Chartreuse
Make 12

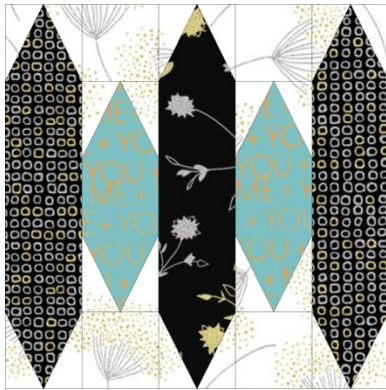


Section 2 with 128-182 Ginger
Make 12

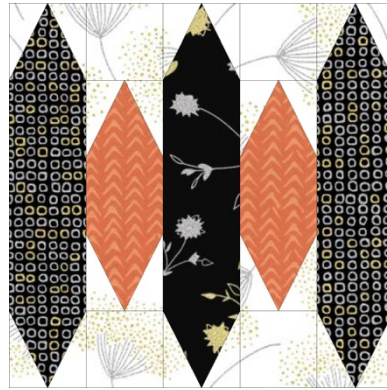


Section 2 with 149-61G Turq/Gold
Make 8

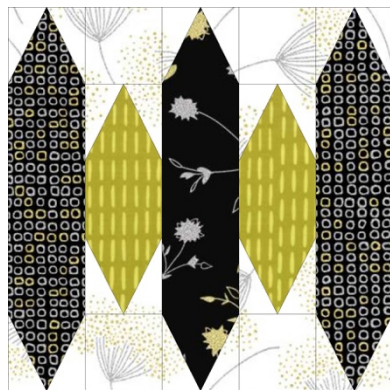
5. Sew the sections together to make the blocks in the quantities shown using the sections indicated below.



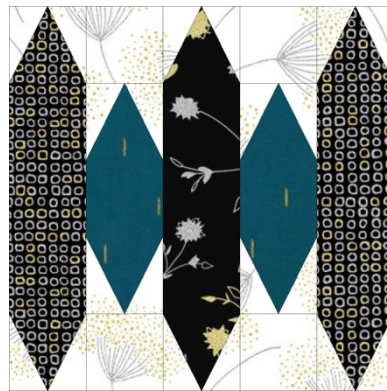
Block 1, Make 9



Block 2, Make 6



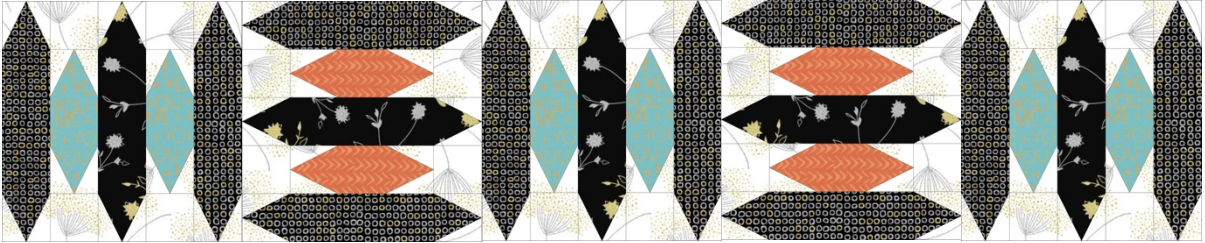
Block 3, Make 6



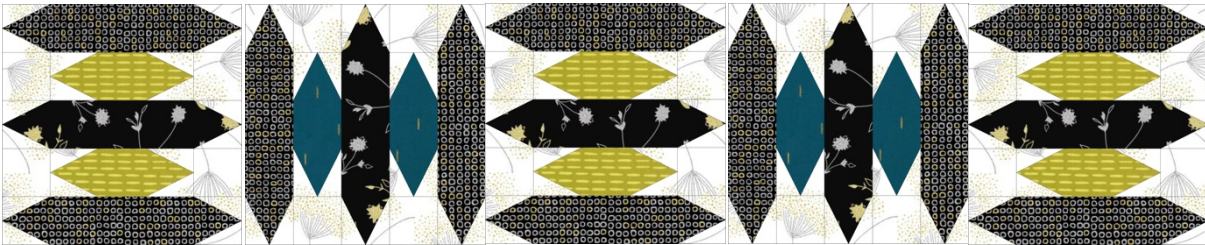
Block 4, Make 4

Sewing the Quilt Top:

6. Noting block orientation, sew three rows as shown below using three of block 1 and two of block 2.



7. Noting block orientation, sew two rows as shown below using three of block 3 and two of block 4.



8. Sew the six Q4468 4M strips together, making sure the giraffes all face the same direction. Cut into four lengths of $50 \frac{1}{2}$ ".
9. Sew the rows and sashing together alternately, starting with row 1.



10. Sew the 128-182 Ginger strips together end to end. Measure the quilt top from top to bottom and cut two lengths equal to this measurement. Sew these strips to the sides of the quilt top. Measure the quilt top from side to side and cut two lengths equal to this measurement. Sew one strip to the top and one strip to the bottom of the quilt top.
11. Repeat step 10 with the Q4471 4M strips. (see attached assembly diagram)
12. Carefully remove the foundation papers.
13. Layer and baste together the backing, batting and quilt top. Quilt as desired.
14. Bind with Q4471 4M.

